



Minuteman Office Park 3

13961 South Minuteman Dr. (East Frontage Rd) - Draper, Utah

For Lease



Information:

- AVAILABLE SPACE
Suite 101 3,171 RSF
- LEASE RATE: \$15.50 / SF NNN
- Tenant improvements available
- 5/1,000 parking
- Fiber optics
- Class A finish / 3 story building
- Building crown signage
- High-profile I-15 visibility
- Ideal location at the Point of the Mountain



Contact:

Brandon D. Fugal

801.947.8300 office
brandon.fugal@coldwellutah.com

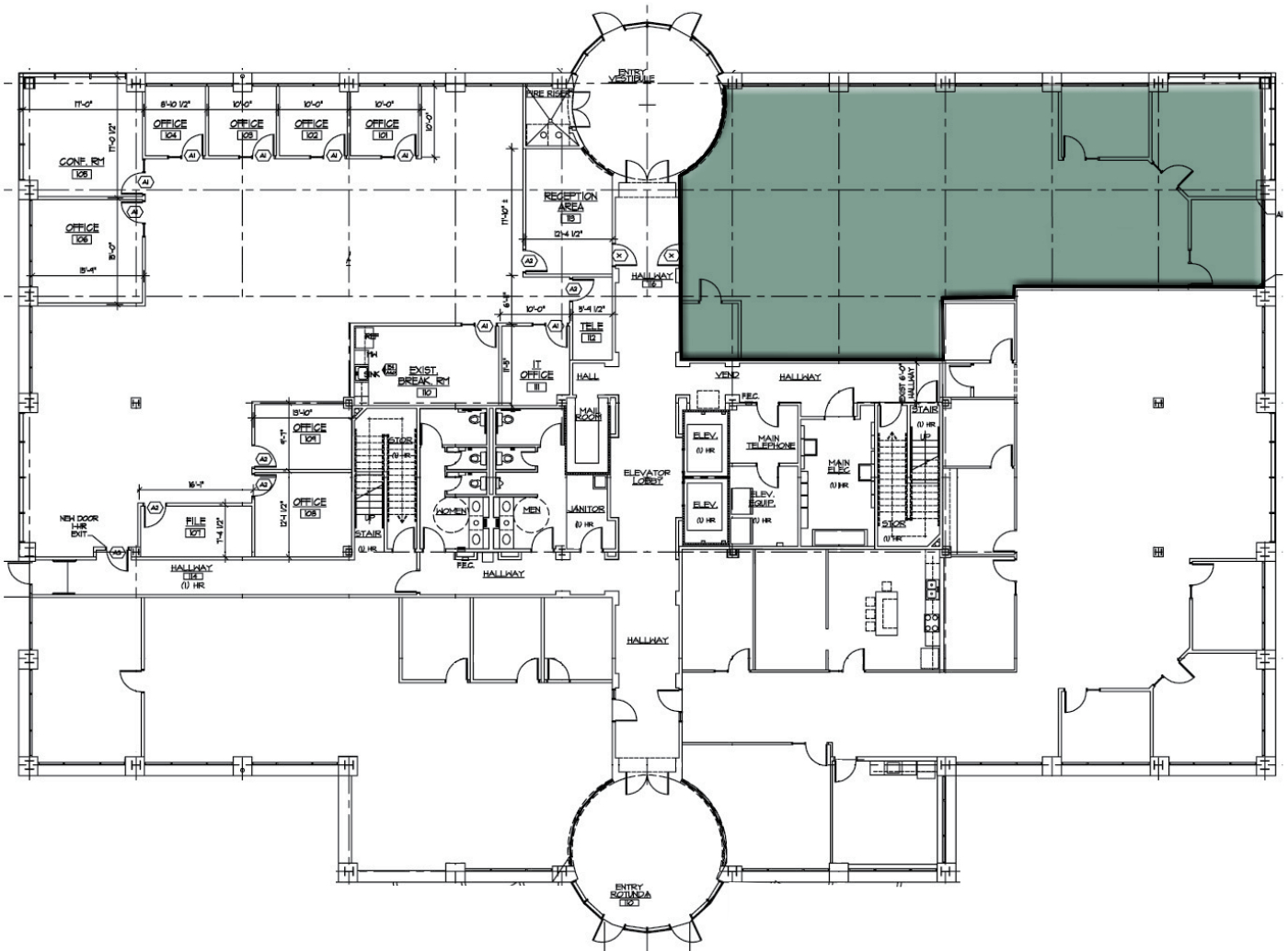
Douglas M. Petty, CCIM

801.947.8300 office
doug.petty@coldwellutah.com



Coldwell Banker Commercial NRT | 6550 South Millrock Drive, Suite 200 | Salt Lake City, Utah 84121
801.947.8300 phone | 801.947.8301 fax | www.coldwellutah.com

1ST FLOOR



Brandon D. Fugal
801.947.8300 office
brandon.fugal@coldwellutah.com

Douglas M. Petty, CCIM
801.947.8300 office
doug.petty@coldwellutah.com

